

Major scales

Notice that each scale uses ONLY the accidentals used in the Key Signature with the same name (see the Key Signature page).

Major scales from sharp key signatures in the Bass clef.



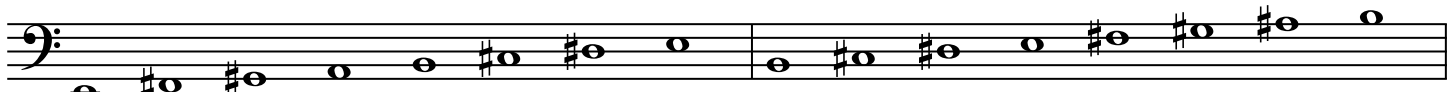
C major (no sharps)

G major (1 sharp)



D major (2 sharps)

A major (3 sharps)



E major (4 sharps)

B major (5 sharps)



F# Major (6 sharps)

C# major (7 sharps)

Major scales from flat key signatures in the Bass clef:



F major (1 flat)

B \flat major (2 flats)



E \flat major (3 flats)

A \flat major (4 flats)



D \flat major (5 flats)

G \flat major (6 flats)



C \flat major (7 flats)

Natural Minor Scales

Notice that each scale uses ONLY the accidentals used in the Key Signature with the same name

Natural minor scales from sharp key signatures in the Bass clef.



a minor (no sharps)

e minor (1 sharp)



b minor (2 sharps)

f# minor (3 sharps)



c# minor (4 sharps)

g# minor (5 sharps)



d# minor (6 sharps)

a# minor (7 sharps)

Natural minor scales from flat key signatures in the Bass clef:



d minor (1 flat)

g minor (2 flats)



c minor (3 flats)

f minor (4 flats)



b minor (5 flats)

eb minor (6 flats)

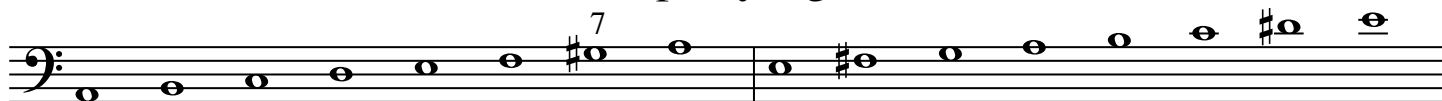


ab minor (7 flats)

Harmonic Minor Scales

Notice that each scale uses the accidentals used in the Key Signature with the same name BUT you RAISE the 7th scale degree one half step.

Harmonic minor scales from sharp key signatures in the Bass clef.



a minor (no sharps)

e minor (1 sharp)



b minor (2 sharps)

f# minor (3 sharps)



c# minor (4 sharps)

g# minor (5 sharps)



d# minor (6 sharps)

a# minor (7 sharps)

Harmonic minor scales from flat key signatures in the Bass clef:



d minor (1 flat)

g minor (2 flats)



c minor (3 flats)

f minor (4 flats)



b minor (5 flats)

eb minor (6 flats)



ab minor (7 flats)

Melodic Minor Scales

Notice that each scale uses the accidentals used in the Key Signature with the same name BUT you RAISE the 6th AND 7th scale degree one half step.

Melodic minor scales from sharp key signatures in the Bass clef.



a minor (no sharps)

e minor (1 sharp)



b minor (2 sharps)

f# minor (3 sharps)



c# minor (4 sharps)

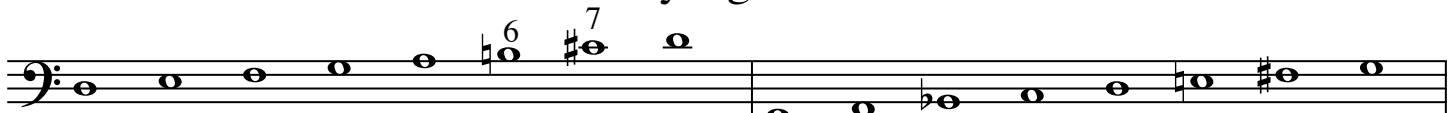
g# minor (5 sharps)



d# minor (6 sharps)

a# minor (7 sharps)

Melodic minor scales from flat key signatures in the Bass clef:



d minor (1 flat)

g minor (2 flats)



c minor (3 flats)

f minor (4 flats)



b minor (5 flats)

eb minor (6 flats)



ab minor (7 flats)

BLUES SCALES

C BLUES



F BLUES



G BLUES



D BLUES



Bb BLUES



A BLUES



Eb BLUES



E BLUES



Ab BLUES



B BLUES



Db BLUES



F# BLUES

